



## 2004/197 Castlereagh Street Sydney NSW

2  1  1 

Immersed in the acclaimed outstanding well-maintained complex with low strata fee, this immaculately maintained 2 bedroom apartment presents a wonderfully convenient and affordable city address. An astute investment opportunity capturing views across Hyde Park, it's just moments to the financial centre, cultural attractions, great dining and entertainment.

**View :** <https://www.srmetro.com.au/sale/nsw/sydney-city/sydney/residential/apartment/5716551>

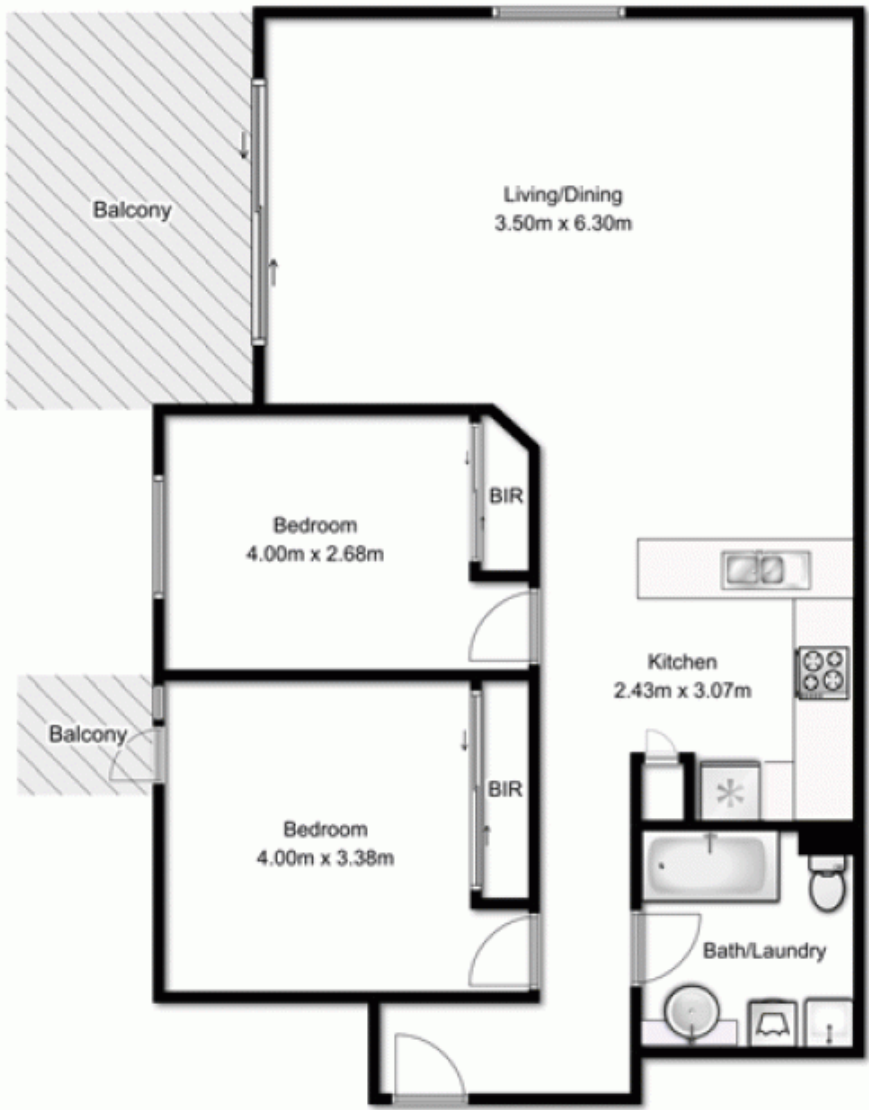
Desirable corner position  
Decent 2 bedroom with built-ins  
East facing balcony with Park view  
Spacious L- shape lounge  
Large bathroom with integrated laundry space  
Ducted air conditioning  
Current rental \$750pw excluding parking



**Paul Ding**  
02 9283 2832

Strata: \$1586 qtr approx

<https://www.srmetro.com.au>



APARTMENT  
APPROX. FLOOR  
AREA 84.0 SQ.M.

SECURE CAR SPACE  
APPROX. FLOOR  
AREA 14.0 SQ.M.

TOTAL APPROX. FLOOR AREA 98.0 SQ.M.  
Measurements are approximate. Not to Scale. For illustrative purposes only.