



1/17 Canberra Road Sylvania NSW

3 2 2

Peacefully set in quiet surrounds, this fabulous dual level townhouse offers a spacious family retreat and a lifestyle of superb convenience. It is ideally placed moments to transport, parklands and Southgate Shopping Centre.

- Open plan living/dining lead to courtyard perfect for entertaining
- 3 generous bedrooms all with built-ins
- Granite kitchen with stainless steel appliances
- Additional family room upstairs for late night retreat
- New paints and carpets
- Master bedroom with ensuite and Juliette balcony
- Home office or guest room with windows
- Full brick construction; ducted air-conditioning
- Powder room; only one common wall
- Remote controlled double lock up garage

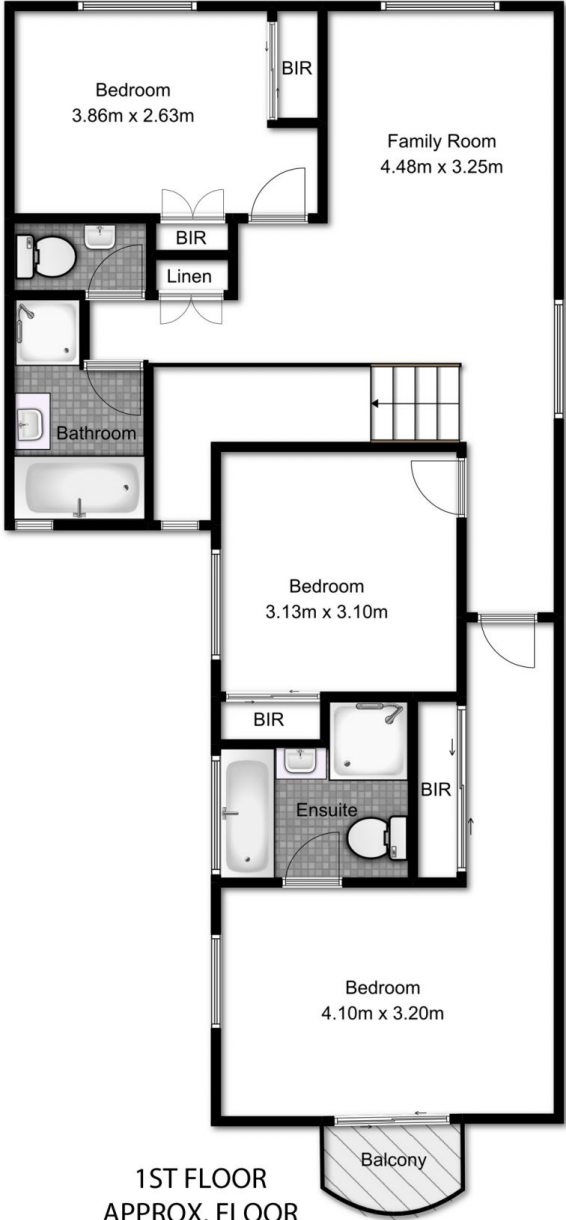
Building Size : 244 sqm
View : <https://www.srmetro.com.au/sale/nsw/sutherland/sylvania/residential/townhouse/5716541>



Bernard Tsang
02 9283 2832



GROUND FLOOR
APPROX. FLOOR
AREA 162.0 SQ.M.



1ST FLOOR
APPROX. FLOOR
AREA 82.0 SQ.M.

TOTAL APPROX. FLOOR AREA 244.0 SQ.M.
Measurements are approximate. Not to Scale. For Illustrative purposes only.