

22/137 Bathurst Street Sydney NSW

1 1

Set right in the vibrant heart of the CBD, with every conceivable amenity at its doorstep, this cozy 61sqm one bedroom apartment is perfectly positioned with unmatched convenience.

Building Size : 61 sqm
View : <https://www.srmetro.com.au/sale/nsw/sydney-city/sydney/residential/apartment/5716486>

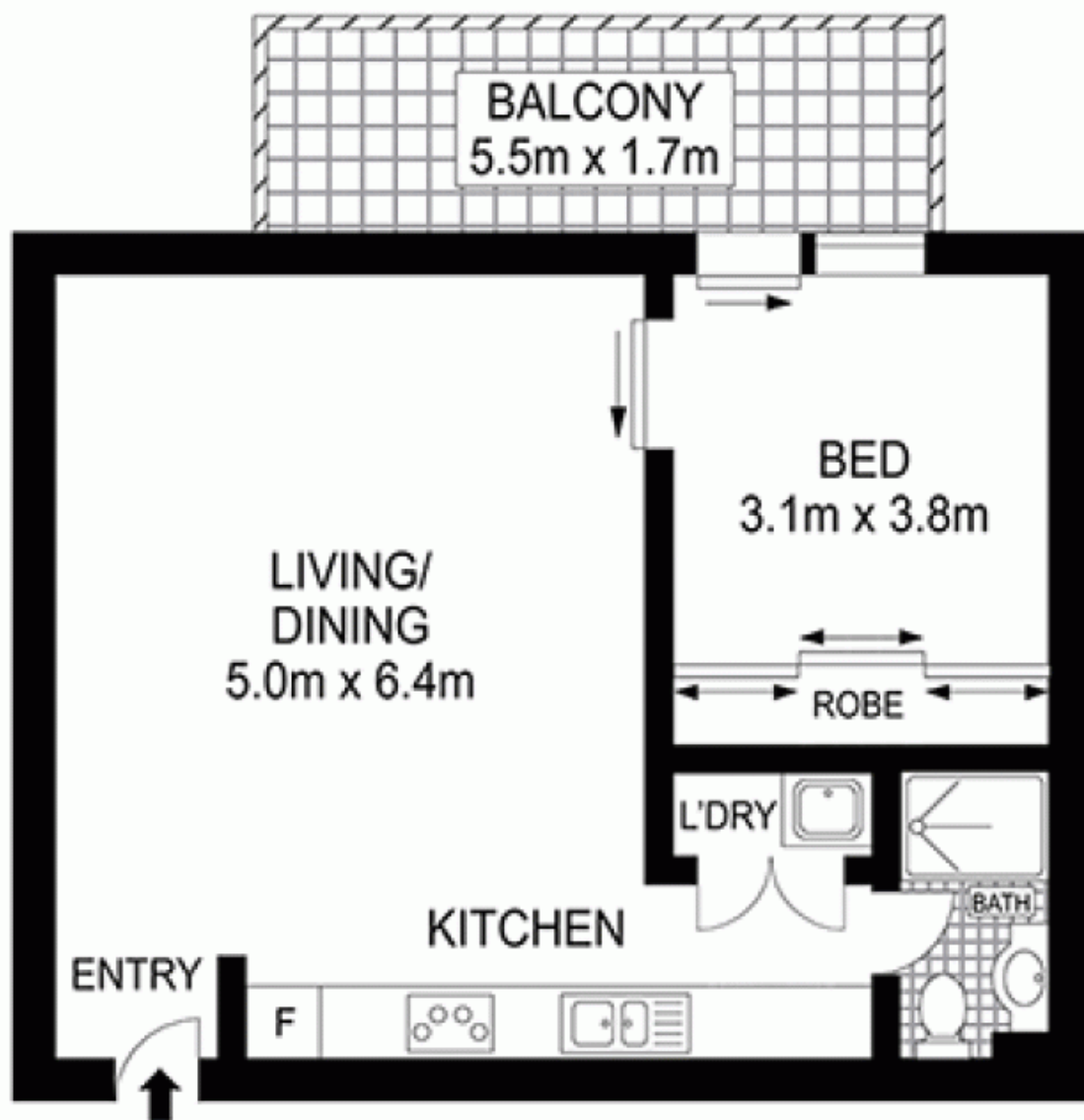
Open city outlook with dual north aspect
Generous double bedroom with built-in wardrobes
Inviting lounge/dining flows to sunny balcony
Elegantly appointed kitchen with stainless steel appliances and granite bench top
Abundance of natural light creates a bright and fresh ambience
Close proximity to Hyde Park and Town Hall station.
Current tenanted on expired lease



Paul Ding
02 9283 2832

Strata \$1344 qtr approx
Council \$208 qtr approx

<https://www.srmetro.com.au>



TOTAL APPROX. FLOOR AREA 64.0 SQ.M.
Measurements are approximate. Not to Scale. For illustrative purposes only.
Produced by Open2View.com.au