



64/267 Castlereagh Street Sydney NSW

2 2 1

Perched high on the tightly held Museum Tower, and embracing the stunning views of Hyde Park & Sydney Harbour, is this completely transformed 2 bedroom apartment of immense comfort and charm.

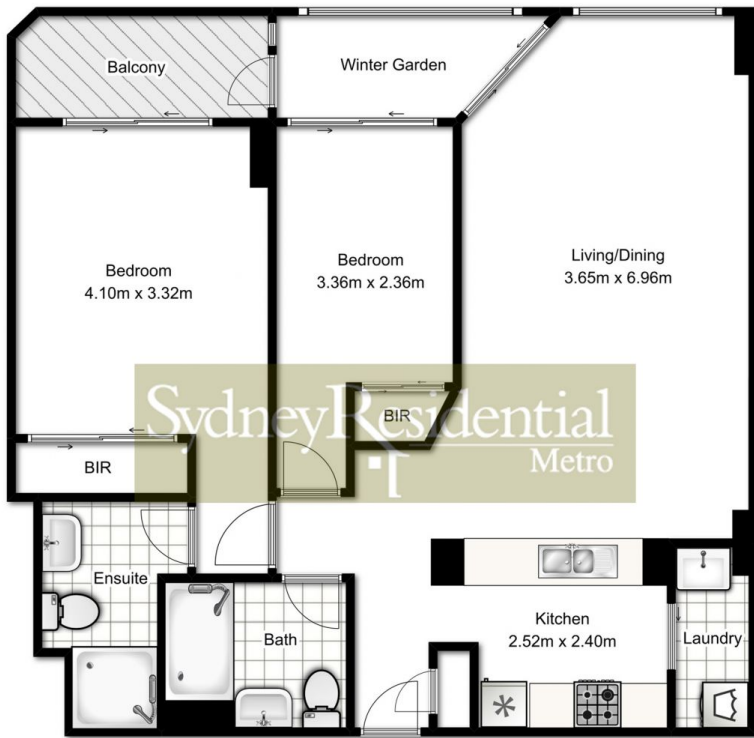
Land Size : 107 sqm
View : <https://www.srmetro.com.au/sale/nsw/sydney-city/sydney/residential/apartment/5716375>

Conveniently located opposite the heritage Mark Foy building, and moment to Museum Station and Hyde Park, the apartment offers a perfect mix of convenient and peaceful quiet City living.



Paul Ding
02 9283 2832

North east facing aglow in refreshing morning sun
 2 beds, 2 baths, large sunroom plus open balcony
 Modern stone kitchen bench top and splash back
 Stainless steel appliances & glass top vanities
 Genuine Blum cabinet draw runners
 Secure car space on title, plus visitors parking
 Indoor resort facilities, plus rare full roof top terrace



APARTMENT
APPROX. FLOOR
AREA 93.0 SQ.M.



SECURE CAR SPACE
APPROX. FLOOR
AREA 14.0 SQ.M.

TOTAL APPROX. FLOOR AREA 107.0 SQ.M.
Measurements are approximate. Not to Scale. For Illustrative purposes only.