

339 Sussex Street Sydney NSW

3 4 2

Immersed in the vibrant city lifestyle, this 242sqm 3 level penthouse apartment is set within moments to Town Hall and World Square Shopping. Short stroll to Darling Harbour & cafes within easy reach, this superb location gives immediate access to the best Sydney has to offer.

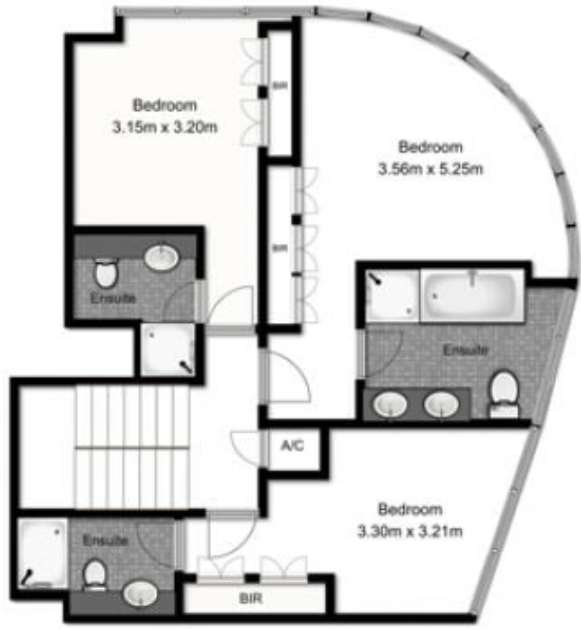
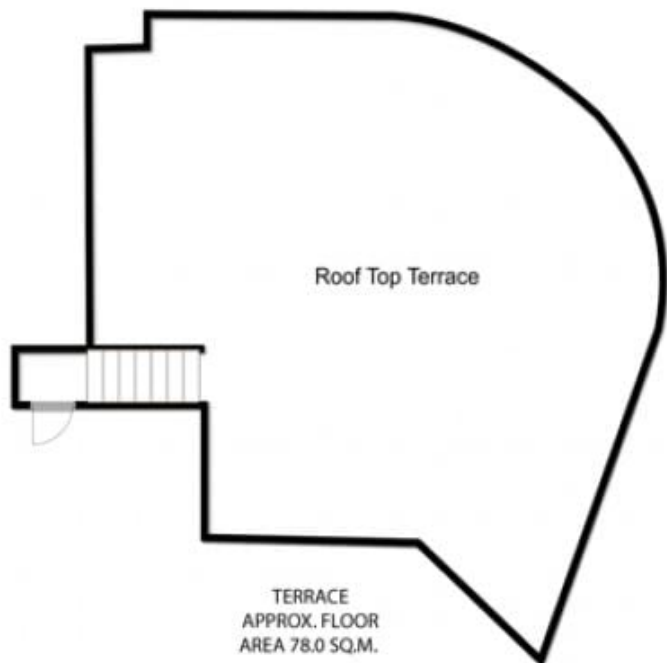
- Open plan living & dining with wrap around floor to ceiling windows
- 3 generous bedrooms all with ensuites
- Deluxe granite kitchen equipped with Smeg gas appliances
- Entertaining rooftop terrace with private internal access
- Ducted air-con, powder room, internal laundry
- Double security parking, 10 sqm storage area
- Reasonable levies

Strata levies: \$2,933.71pq

View : <https://www.srmetro.com.au/sale/nsw/sydney-city/sydney/residential/apartment/5716346>



Paul Ding
02 9283 2832



FIRST FLOOR
APPROX. FLOOR
AREA 80.0 SQ.M.



SECURE CAR SPACES & STORAGE
APPROX. FLOOR
AREA 40.0 SQ.M.

TOTAL APPROX. FLOOR AREA 282.0 SQ.M.
Measurements are approximate. Not to Scale. For illustrative purposes only.