



2604/197 Castlereagh Street Sydney NSW

2  **1**  **1** 

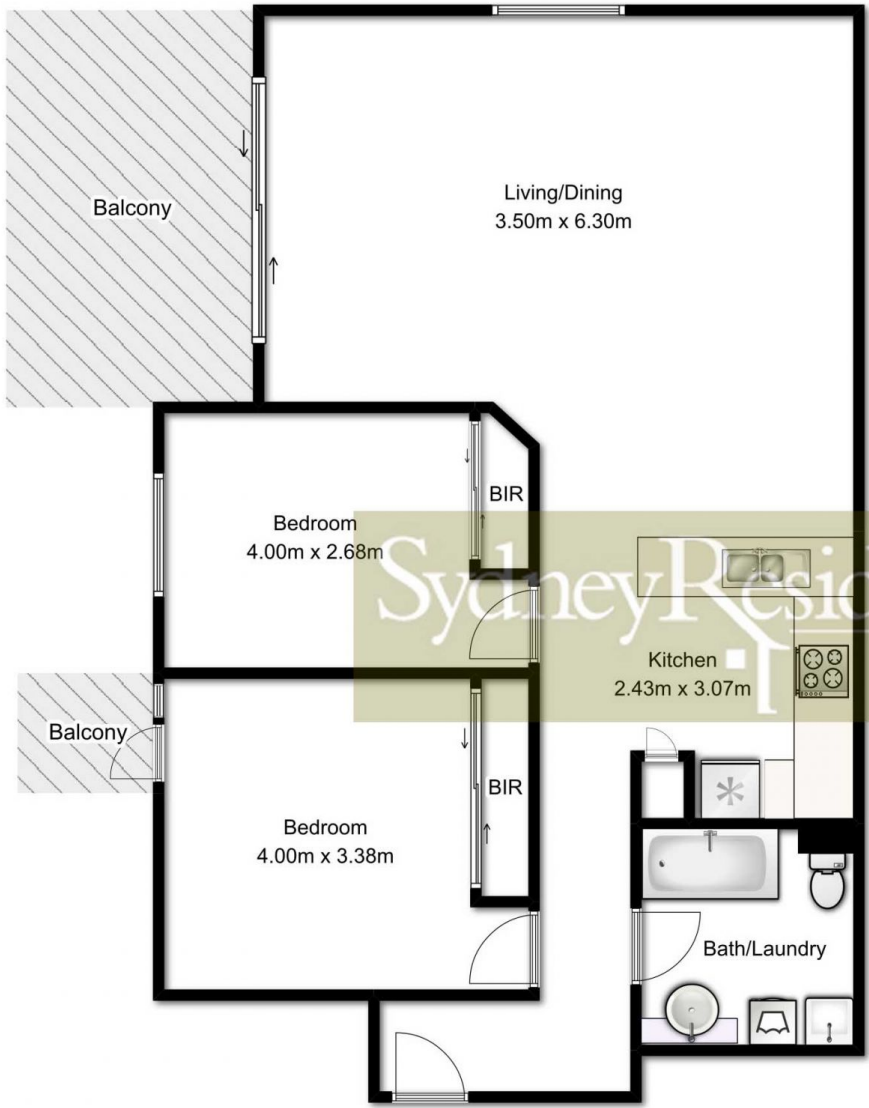
Immersed in the acclaimed outstanding well-maintained complex with low strata fee, this immaculately maintained 2 bedroom apartment presents a wonderfully convenient and affordable city address. An astute investment opportunity capturing views across Hyde Park, it's just moments to the financial centre, cultural attractions, great dining and entertainment.

View : <https://www.srmetro.com.au/sale/nsw/sydney-city/sydney/residential/apartment/5716316>

- Desirable corner position
- Decent 2 bedrooms with built-ins
- East facing balcony with Park view
- Spacious L- shape lounge
- Updated gas kitchen
- Large bathroom with integrated laundry space
- Floating timber flooring
- Ducted air conditioning
- Strong consistent rental returns



Paul Ding
02 9283 2832



APARTMENT
APPROX. FLOOR
AREA 84.0 SQ.M.

SECURE CAR SPACE
APPROX. FLOOR
AREA 14.0 SQ.M.

TOTAL APPROX. FLOOR AREA 98.0 SQ.M.
Measurements are approximate. Not to Scale. For Illustrative purposes only.