



289 Sussex Street SYDNEY NSW

1 1 1

Quietly located at the back end of the Millennium Tower complex between Darling Harbour and Town Hall, with every conceivable amenity at its doorstep, this fairly maintained one bedroom apartment is perfectly positioned with unmatched convenience.

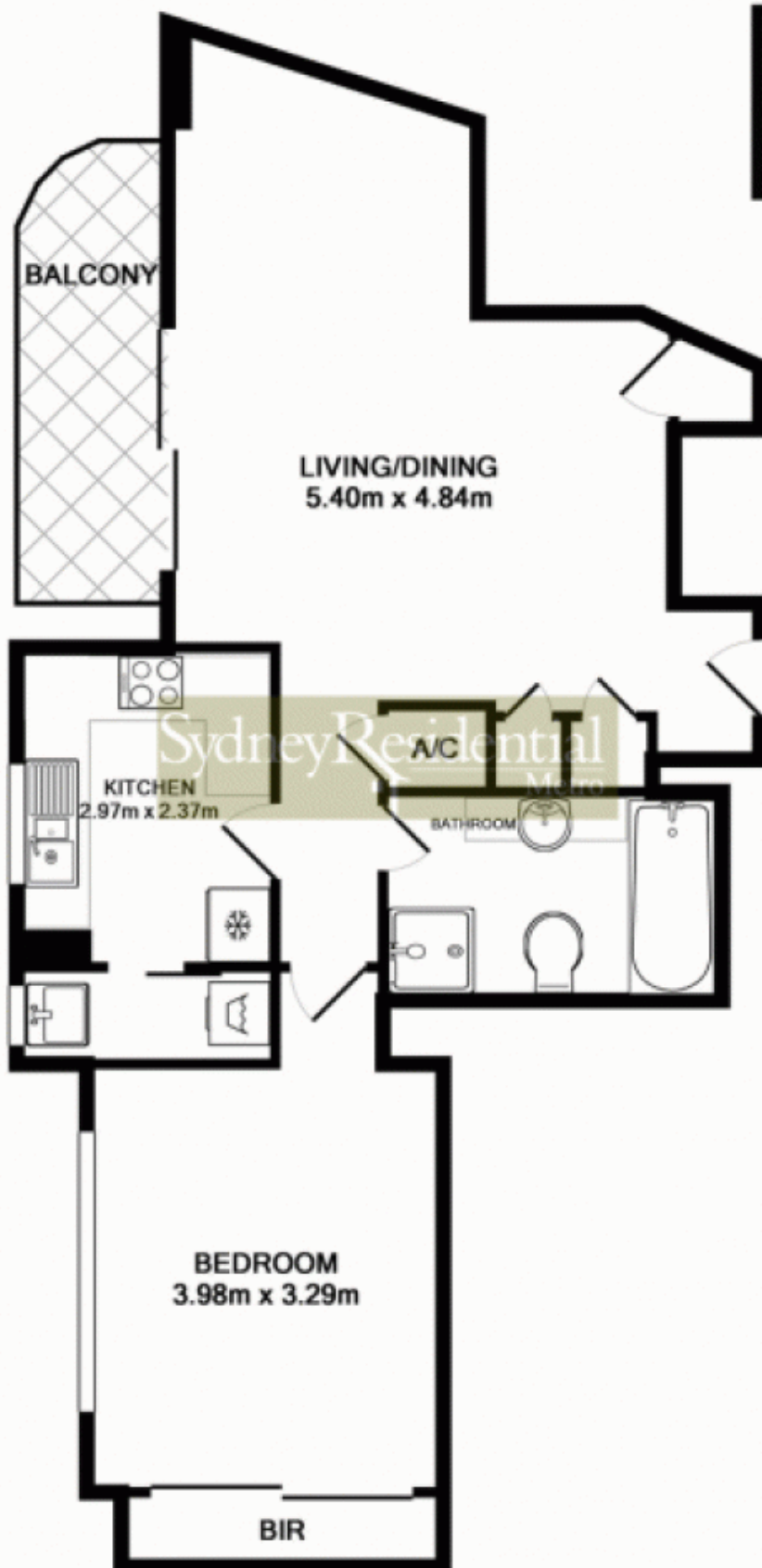
An astute investment opportunity, it's just moments to the financial centre, cultural attractions, great dining and entertainment.

- * Large bedroom with mirrored built-in
- * Peaceful and quiet garden outlook
- * Spacious rectangular L-shape lounge
- * Well-kept gas kitchen
- * Laundry space & LUG on title
- * On site manager & 24 hour security
- * Current rent \$550pw till 24/9/14

View : <https://www.srmetro.com.au/sale/nsw/sydney-city/sydney/residential/apartment/5716254>



Paul Ding
02 9283 2832



APARTMENT
APPROX. FLOOR
AREA 69.0 SQ.M.

SECURE CAR SPACE
APPROX. FLOOR
AREA 16.0 SQ.M.

TOTAL APPROX. FLOOR ARE 85.0 SQ.M.
Measurements are approximate. Not to Scale. For illustrative purposes only.
Produced by Open2View.com.au