



### 38/1 Murray Street PYRMONT NSW

3 2 2

Within the prestigious Mirvac building 'The Gateway', this sensational lifestyle purchase is located at the doorstep of Darling Harbour and the newly revitalised Star Casino complex. Set amid lush tropical gardens and enjoying use of superb facilities, the impeccably appointed 138sqm apartment captures intimate harbour views.

- \* Spacious main wing with marble floored ensuite
- \* Generous living with large covered balcony
- \* Granite Smeg gas gourmet kitchen, ducted a/c
- \* Indoor pool, gym, sauna, spa, double parking
- \* Dining, shops, entertainment, parks at door
- \* Pyrmont ferry wharf and tram metres away

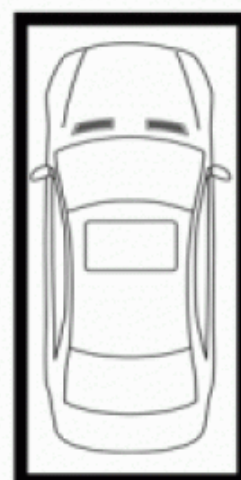
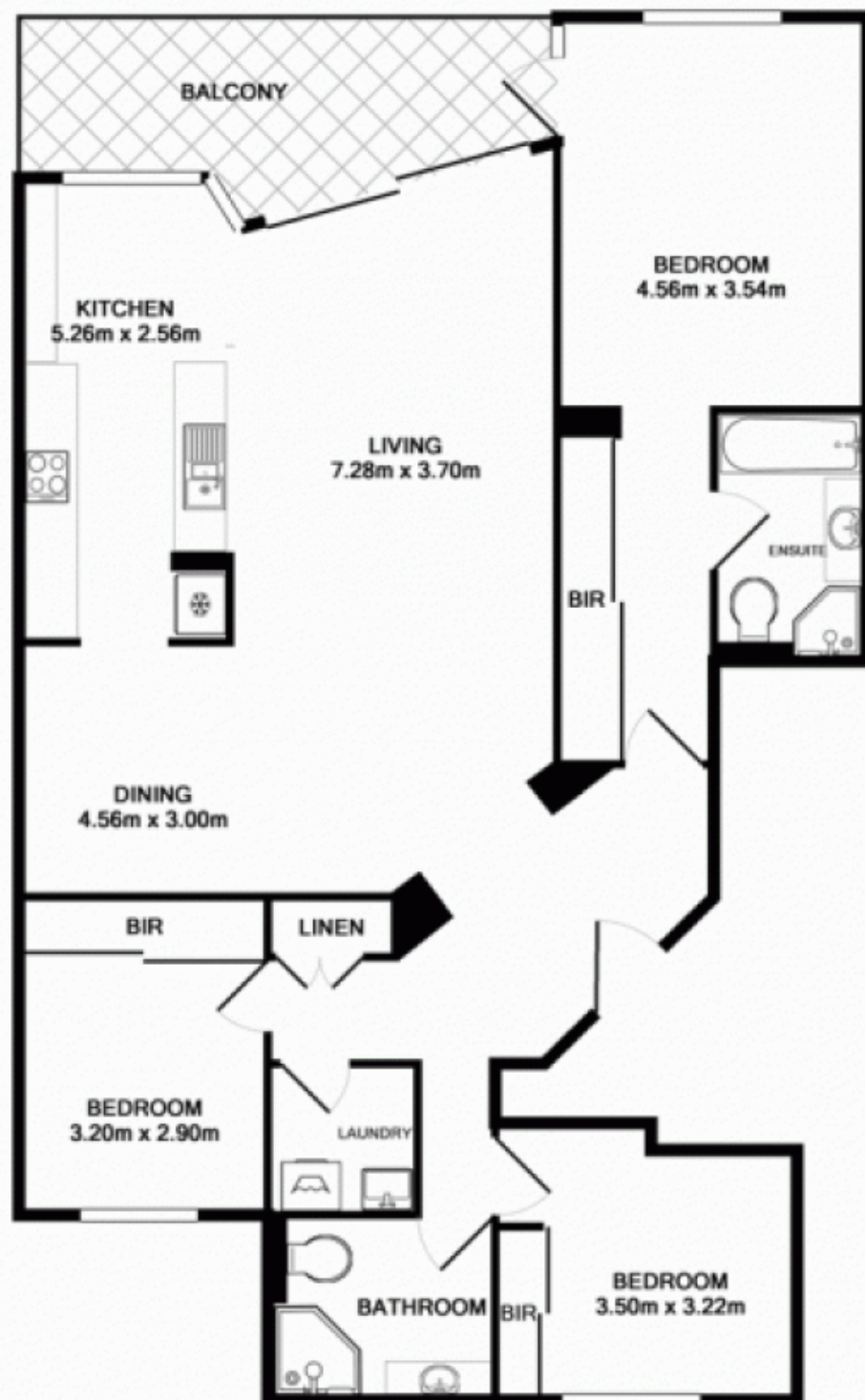
Strata \$2254 qtr, Council \$208 qtr, Water \$153 qtr

**Building Size** : 15 sqm

**View** : <https://www.srmetro.com.au/sale/nsw/sydney-city/pyrmont/residential/apartment/5716251>



**Paul Ding**  
02 9283 2832



SECURE CAR SPACES  
APPROX. FLOOR  
AREA 30.0 SQ.M.



APARTMENT  
APPROX. FLOOR  
AREA 138.0 SQ.M.

TOTAL APPROX. FLOOR AREA 168.0 SQ.M.  
Measurements are approximate. Not to Scale. For illustrative purposes only.  
Produced by Open2View.com.au