



12/569 George Street SYDNEY NSW

2 **2** **1**

Set right in the vibrant heart of the CBD opposite World Square, with every conceivable amenity at its doorstep, this decent 2 bedroom apartment is perfectly positioned with unmatched convenience.

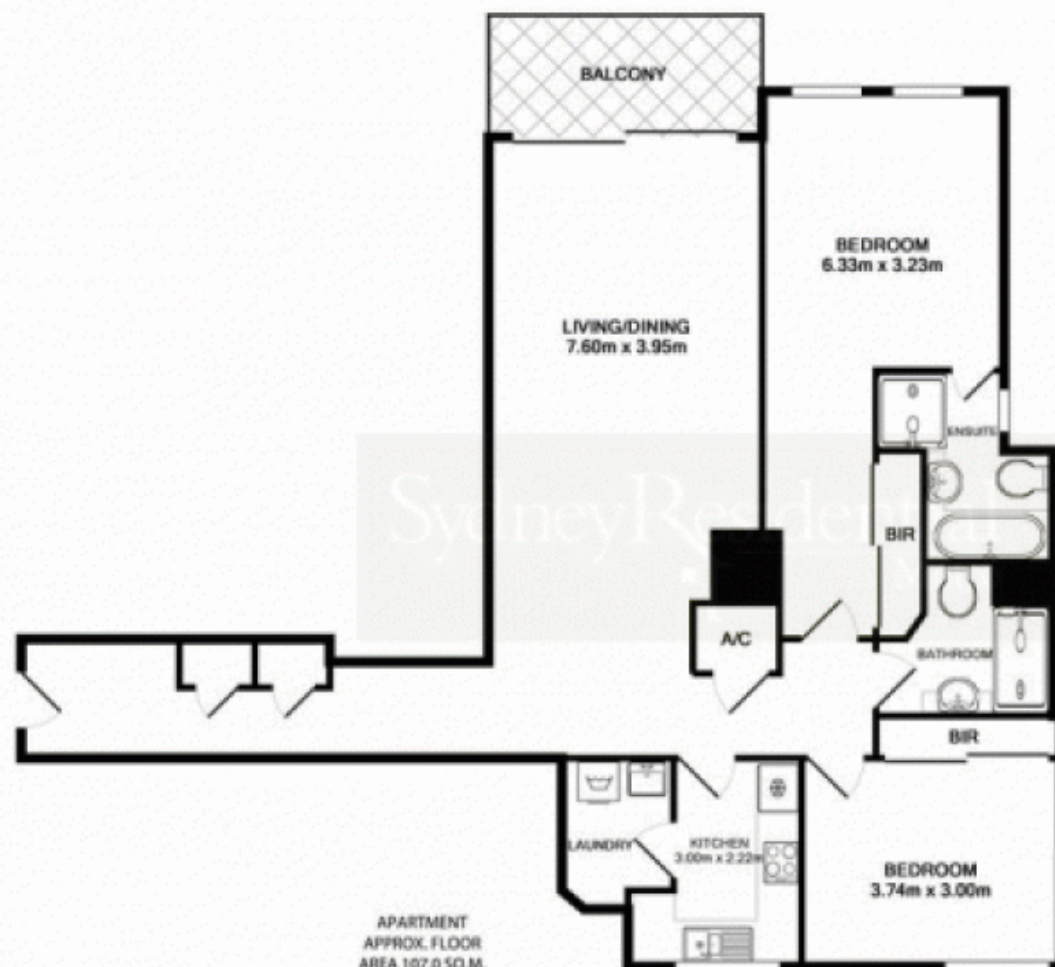
On the 7th floor with northwest aspect
Spacious rectangular shape lounge room
Hall way entrance, private & secluded
Generous double bedrooms with built-in wardrobes
Separate kitchen with window access
107sqm of living space plus security parking
Currently let at \$780pw.

Strata Levies: \$1,872 qtr approx
Council Rates: \$237 qtr approx
Water Rates: \$168 qtr approx

Building Size : 12 sqm
View : <https://www.srmetro.com.au/sale/nsw/sydney-city/sydney/residential/apartment/5716250>



Paul Ding
02 9283 2832



CAR SPACE
APPROX. FLOOR
AREA 19.0 SQ.M.



TOTAL APPROX. FLOOR AREA 126.0 SQ.M.
Measurements are approximate. Not to Scale. For illustrative purposes only.
Produced by Open2View.com.au