



47/492-500 Elizabeth Street SURRY HILLS NSW

2  **1**  **1** 

Positioned in one of the most convenient locations in Surry Hills this 2-bedroom unit offers a great opportunity for first home buyers or astute investors. It provides a stylish living with a combined living/dining area leading to a sun drenched balcony.

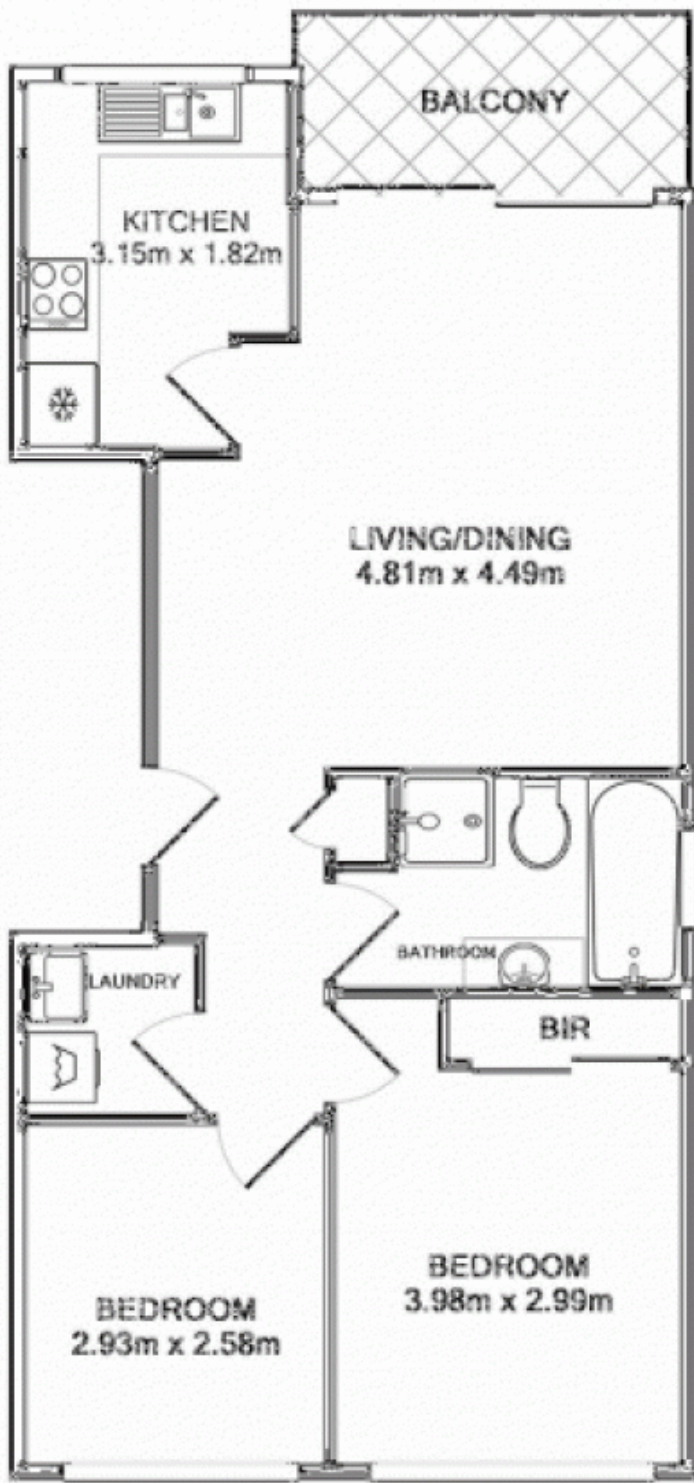
Very affordable and convenient city fringe living within walking distance to central station, Prince Alfred Park & Surry Hills shopping village. The building is of solid full brick construction within a low maintenance security complex.

Features include

- ~Combined lounge and dining with access to balcony
- ~Bright semi-open kitchen with window
- ~Internal laundry
- ~Exceptionally low levies
- ~Suits both first home buyers or investors

Building Size : 7 sqm

View : <https://www.srmetro.com.au/sale/nsw/ea-stern-suburbs/surry-hills/residential/unit/5716246>



APARTMENT
APPROX. FLOOR
AREA 63.0 SQ.M.



LUG
APPROX. FLOOR
AREA 14.0 SQ.M.



TOTAL APPROX. FLOOR AREA 77.0 SQ.M.
Measurements are approximate. Not to Scale. For illustrative purposes only.
Produced by Open2View.com.au