



## 51/308 Pitt Street SYDNEY NSW

2 2 1

This is a home in the City. It's 113 square metres in the unit, plus an additional 20 metres in the security garage. It is the ultimate urban retreat for those seeking vibrant resort style living and unparalleled convenience.

As part of the much sought after "Princeton" complex in the popular Mid City location, this spacious apartment occupies the whole Northern corner of the building and enjoys the privacy of minimal common wall and only 4 lots on each floor.

The apartment has 2 large sun drenched bedrooms, the main with a walk-in-robe and ensuite, and 2nd bedroom has built in wardrobes.

The living area is almost oversized, and on top of all that there's the ceiling to floor glass sunroom, which is ample

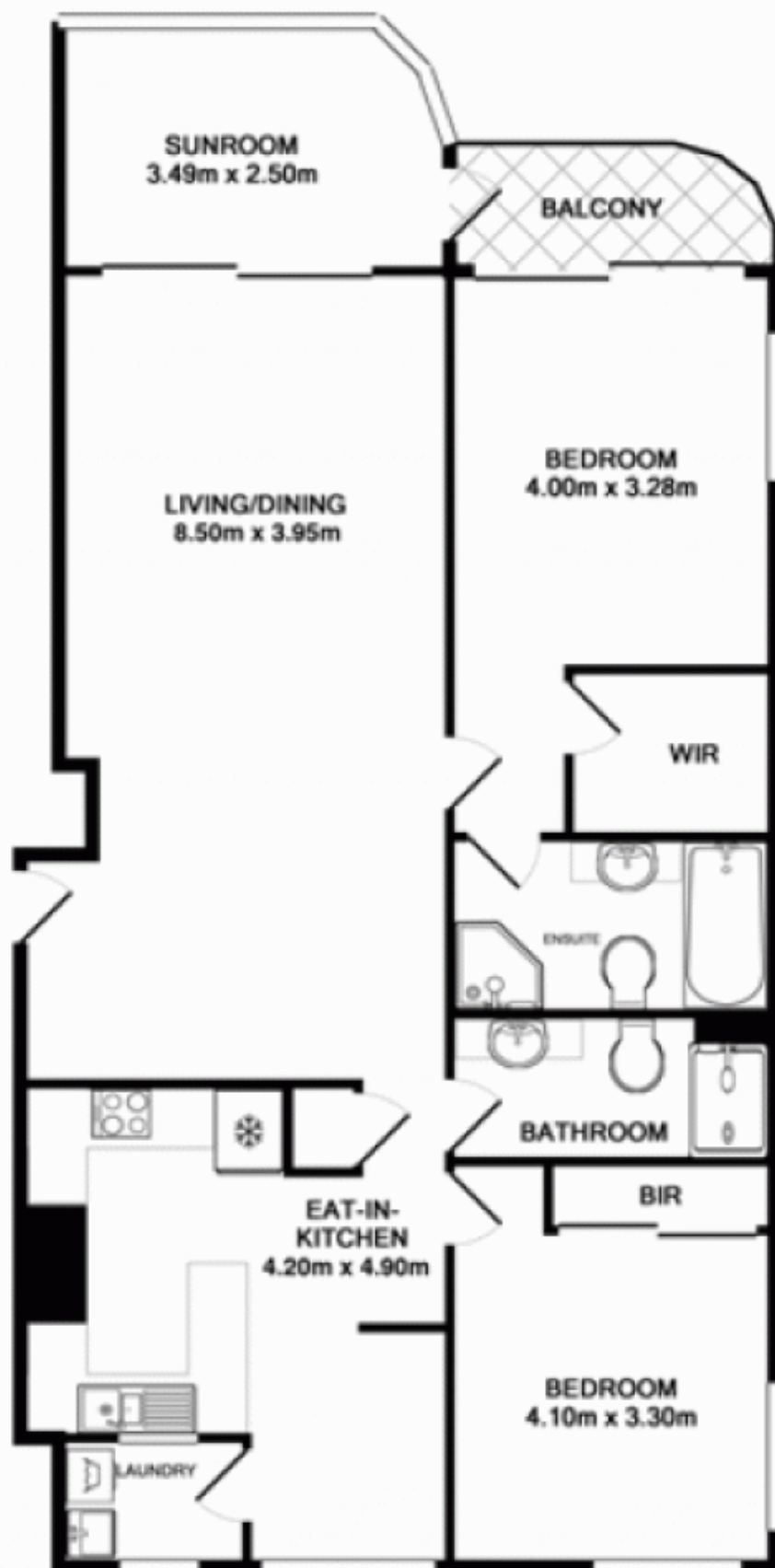
**Building Size** : 12 sqm

**View**

: <https://www.srmetro.com.au/sale/nsw/sydney-city/sydney/residential/apartment/5716240>



**Paul Ding**  
02 9283 2832



APARTMENT  
APPROX. FLOOR  
AREA 113.0 SQ.M.



SECURE CAR SPACE  
APPROX. FLOOR  
AREA 20.0 SQ.M.



TOTAL APPROX. FLOOR AREA 133.0 SQ.M. (1432 SQ.FT.)  
Measurements are approximate. Not to Scale. For illustrative purposes only.  
Produced by Open2View.com.au